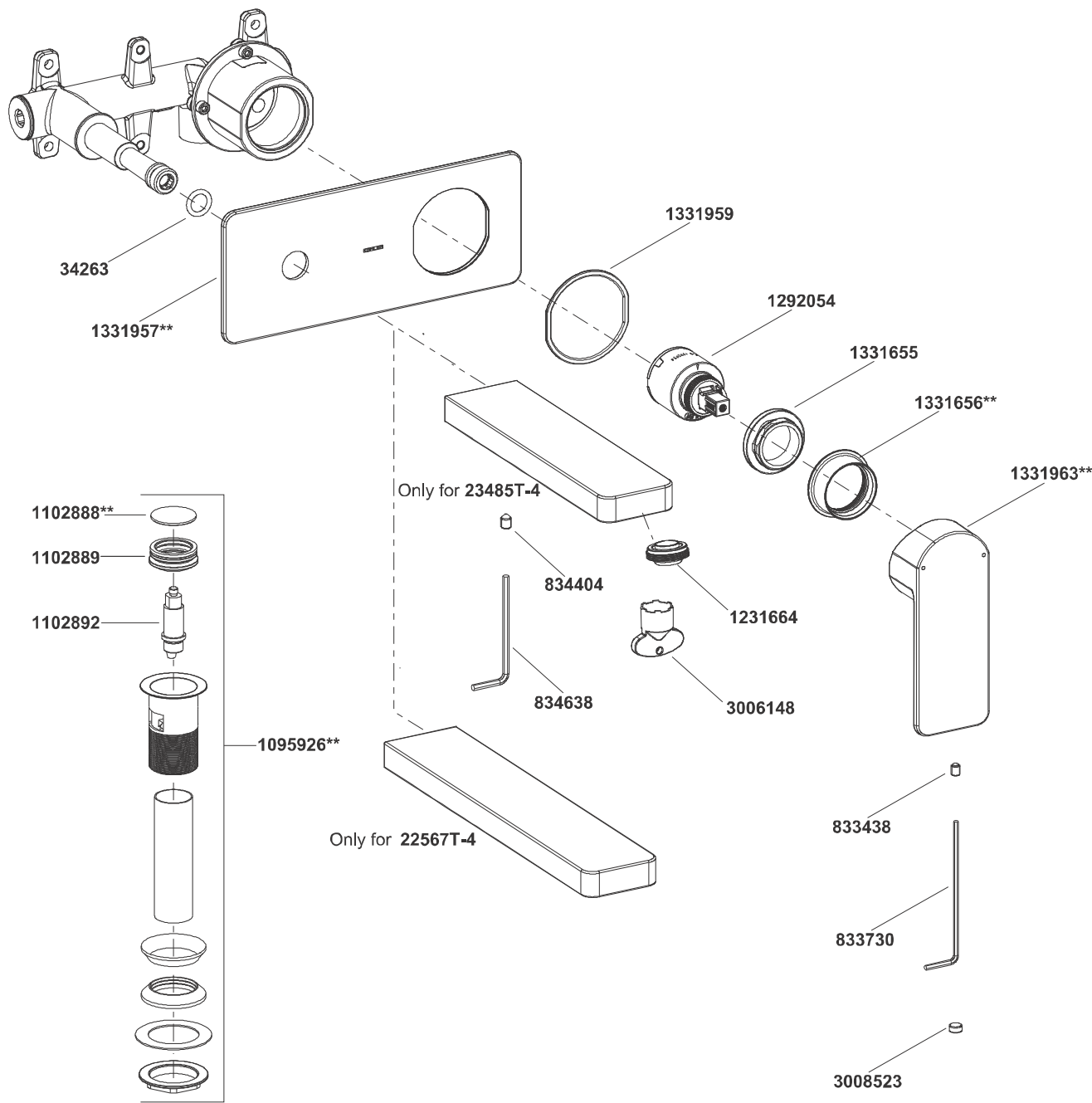


23485T-4 Wall Mount Lavatory Faucet(Short Spout)
22567T-4 Wall Mount Lavatory Faucet(Long Spout)



**Color code must be specified when ordering.
NOTE: For all Asia pacific regions (excluding China) add SP (SPxxxxxx**) in front of the part number when ordering.

23485T-4 Wall Mount Lavatory Faucet(Short Spout)
22567T-4 Wall Mount Lavatory Faucet(Long Spout)

BEFORE YOU BEGIN

All information is based on the latest product information available at the time of publication. Kohler Co. reserves the right to make changes in product characteristics, packaging, or availability at any time without notice.

Please leave these instructions for the consumer. They contain important information.

NOTES:

- 1. Flush the water supply pipes thoroughly to remove debris.
- 2. Inspect the supply tubing for damage and leakage. Replace and maintain as necessary.
- 3. Observe local plumbing codes.
- 4. Check for leaks before covering the pipes, repair as needed.
- 5. Please ensure only apply water pressure test on the product, and empty the air in pipe and faucet thoroughly before the test. Please ensure test pressure below 0.8MPa and test duration within 30 minutes.

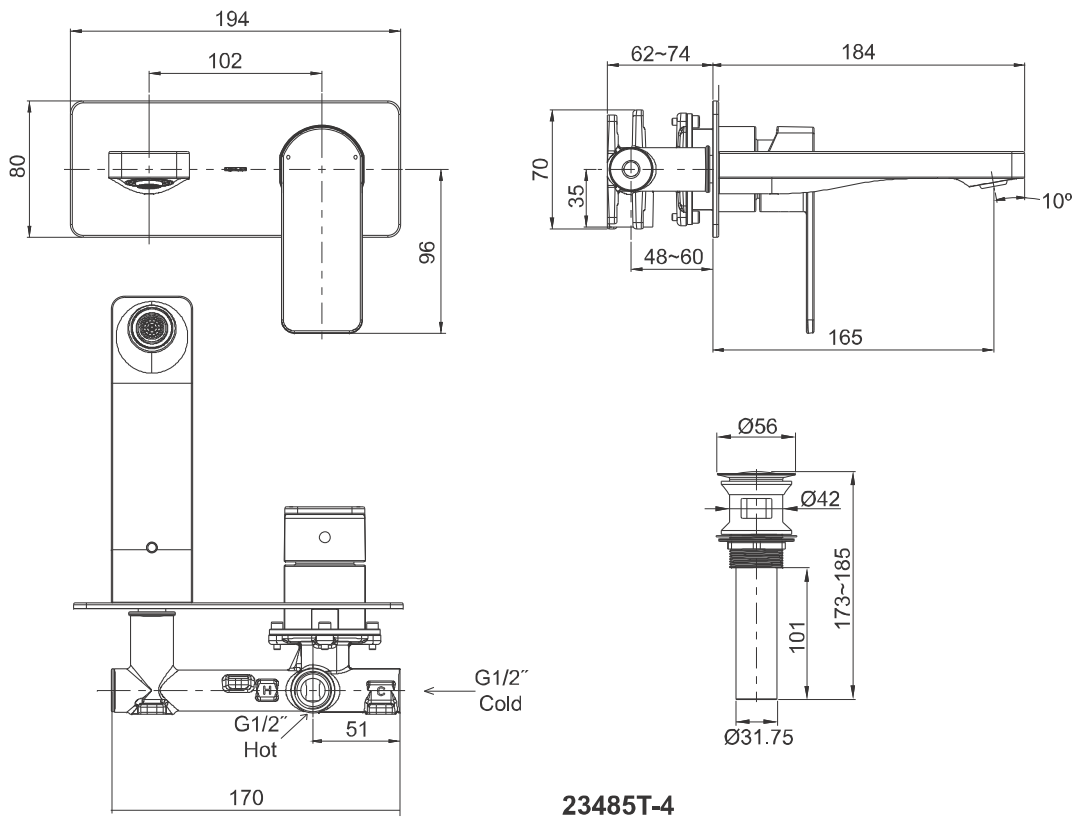
HANDLE OPERATION

Lift handle gently. Turn clockwise for hot water, counter-clockwise for cold water.

STANDARD APPLICABLE

Special model meets or exceeds the following at date of manufacture: TIS

ROUGH-IN DIMENSIONS



23485T-4