



**Vault™**  
Top-/Under-Mount Kitchen Sink  
**K-3822-3**

**Features**

- 27-inch minimum base cabinet width.
- Single bowl.
- 9-inch depth.
- Three faucet holes.
- Rear drain increases workspace in the sink and storage space underneath.
- SilentShield® sound-absorption technology offers quieter performance.
- Includes installation hardware and bottom sink rack.

**Material**

- Handcrafted from 18-gauge stainless steel.
- Premium 18-gauge stainless steel.

**Installation**

- Top-mount or under-mount.

**Recommended Products/Accessories**

K-6645 Sink Rack  
K-8801 Sink Strainer  
K-8799 Sink Strainer

**Optional Products/Accessories**

K-6429 Utility Rack  
K-6667 Wood Cutting Board  
1177161 Installation Clip Kit  
K-11352 Disposal Flange with Stopper

**Included Components**

Product consists of:

K-6645 Sink Rack  
1130570 Hardware Kit, Self-Rimming

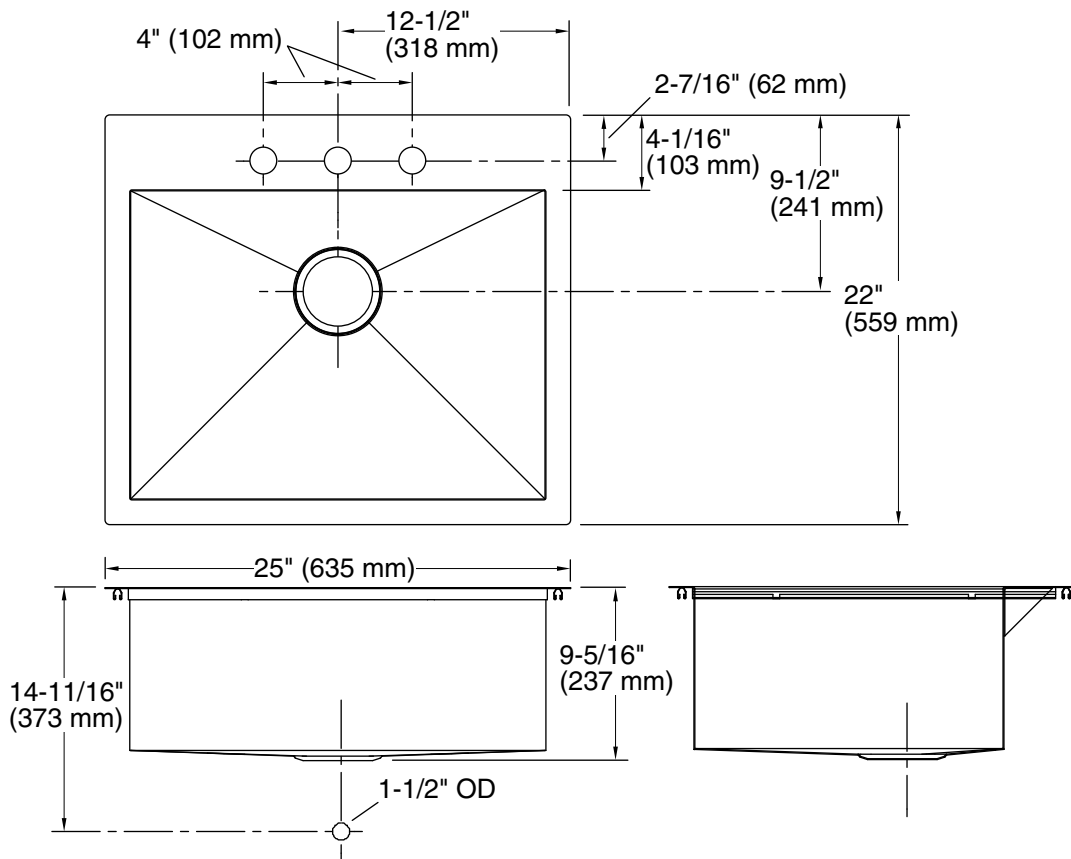


**Codes/Standards**

ASME A112.19.3/CSA B45.4

**Lifetime Limited Warranty for  
KOHLER® Stainless Steel Sinks**

See website for detailed warranty information.



## Technical Information

All product dimensions are nominal.

Bowl configuration:	Single
Installation:	Top-mount, Under-mount
Min. base cabinet width:	27" (686 mm)
Bowl area (Only):	Length: 22-1/4" (565 mm) Width: 16-9/16" (421 mm) Water depth: 9" (229 mm)
Number of deck holes:	3
Faucet hole(s):	1-7/16" (37 mm)
Drain hole:	3-7/8" (98 mm)
Template:	1130822-7, required, included

## Notes

Install this product according to the installation instructions.

Allow 3/4" (19 mm) clearance beyond the back of the bowl for the wood cutting board (optional accessory).